

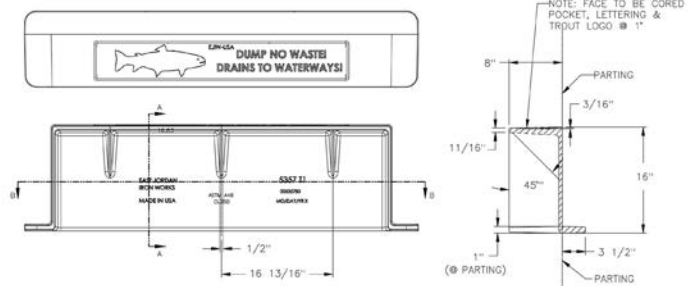
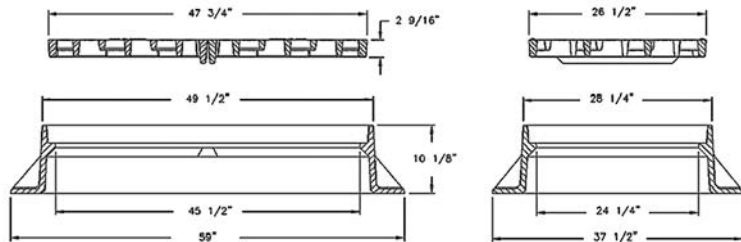
5357 CATCH BASIN INLET

Heavy duty
 Accepts 5355 grates
 With Type M7 diagonal grate
 Approximate 652 sq. in. open area

Options
 Available with 3 or 4 flange frames
 Bolted assembly
 Adjusting risers
 Steel grates
 T1 4' hood



Illustrating 3 flange frame with M7 diagonal grate



Optional T1 Hood

5358 CATCH BASIN INLET

Heavy duty
 Approximate 245 sq. in. open area
 Bolted assembly
 Single grate frame — 5358Z1
 Double grate frame — 5358Z2

